

Participatory Approach in Integrated Water Resources Management

Brown Bag Lunch at World Bank, Washington DC, February 11, 2015



Where to start?

Where to stop?

Integrated Water Resources Management

"a process which promotes the **coordinated** development and management of water, land and related **resources**, in order to maximize the resultant economic and social **welfare** in an **equitable** manner without compromising the **sustainability** of vital ecosystems" (Global Water Partnership)

Why sector integration?

- There is a hydrological cycle, encompassing water and land resources
 - Upstream influences downstream (and sometimes vice versa)
- ➔ Integration over these dimensions should allow overall optimization

Why stakeholder integration?

- Water is life
 - Water is both a private and a public good
- ➔ Stakeholder integration should guarantee equal access to sustain human well being and bring the greatest economic benefit from water use

Five lessons learnt

Don't believe in technocrats

(Canton Zurich, 2000)

A complex grid of indicators with columns for 'Indikatoren' and 'Ziele'. It lists various environmental and water quality metrics such as 'ABR-Gewässerschutz', 'Fließgewässerschutz', and 'Grundwasser' across different phases.

- Indicator systems are a great approach to visualize issues, but don't try to make them comprehensive
- Guidelines on prioritizing water uses is a recurring wish of authorities, but hard to fulfil

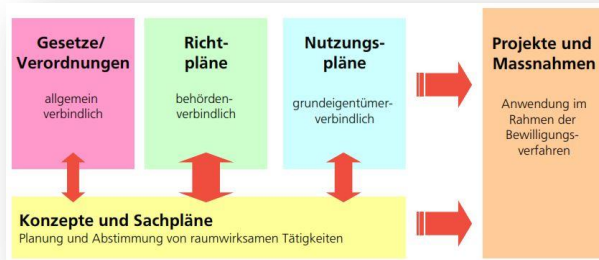


(Canton Aargau, 2004)



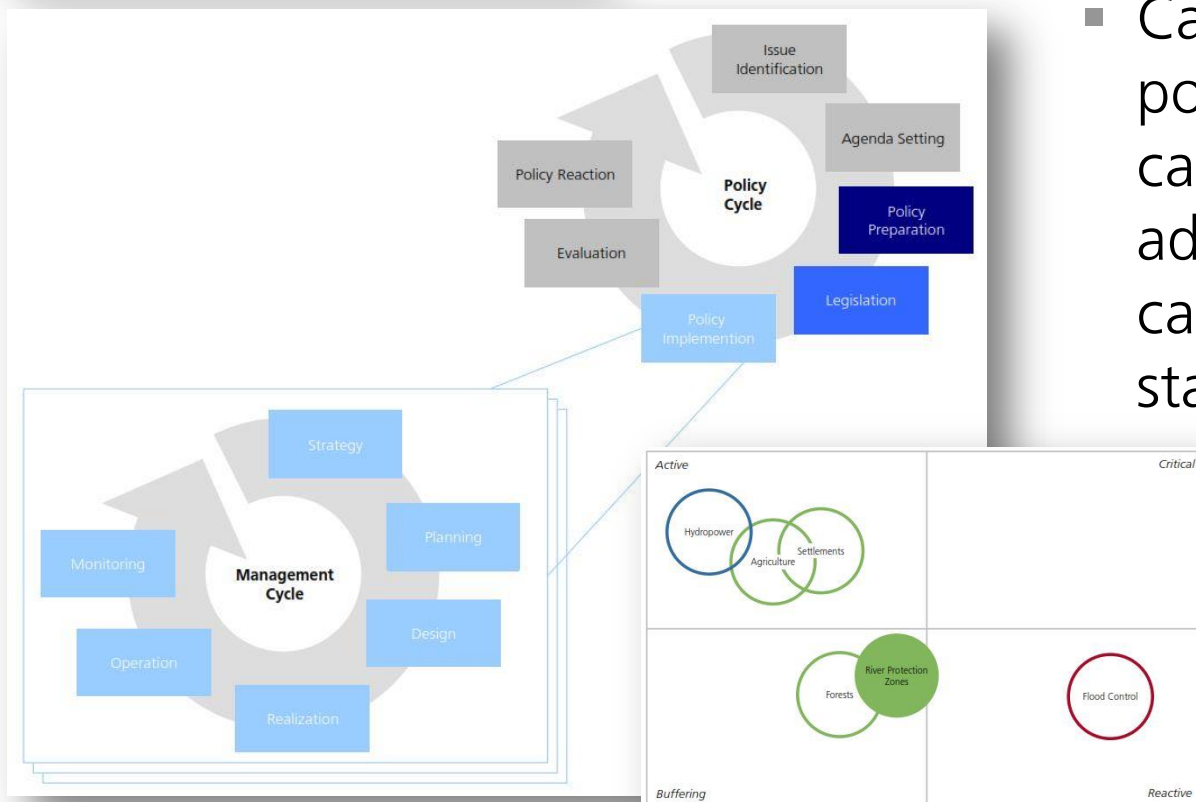
(Canton Basel-Landschaft, 2011)

Stakeholders are different, indeed



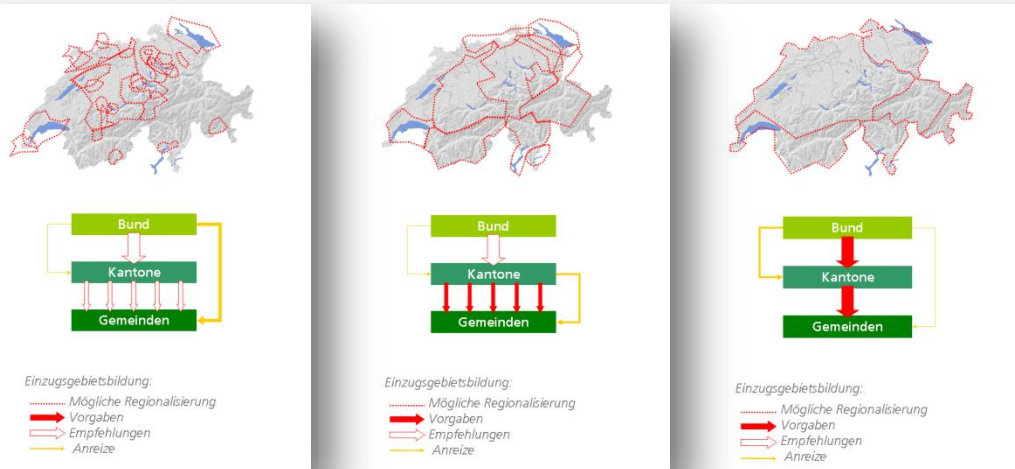
(Canton Zurich, 2000)

- Appraise roles of stakeholders in different stages of policy cycle
- Carefully choose the policy instrument category when addressing different categories of stakeholders



(National Research Program 61, 2013)

Think twice before founding new institutions

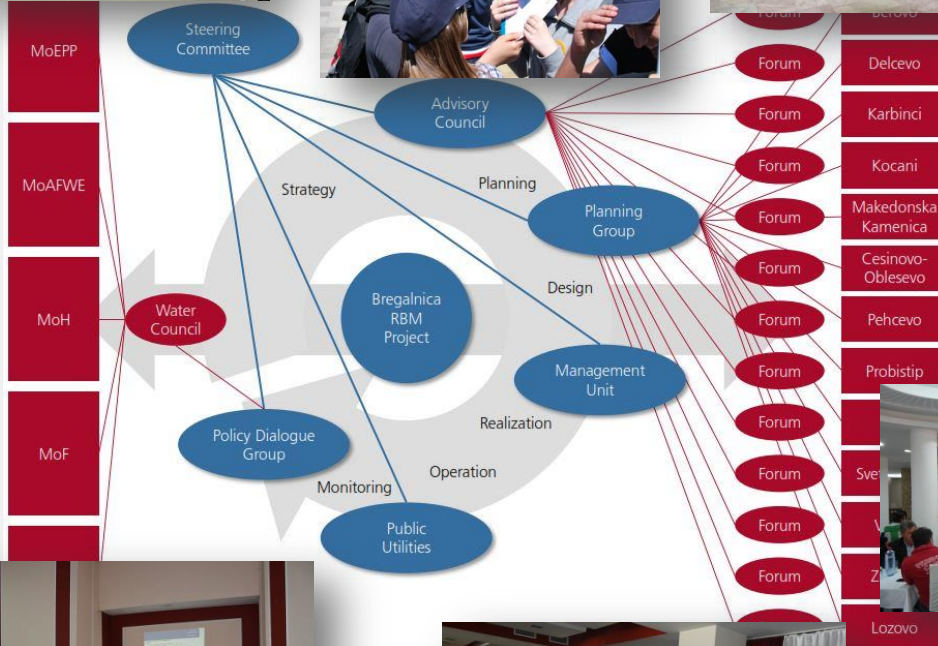


- High-level water management decisions go far beyond water
- Water is essential for, but seldom a driver of economic development

(Institutional Models for Switzerland, 2013)

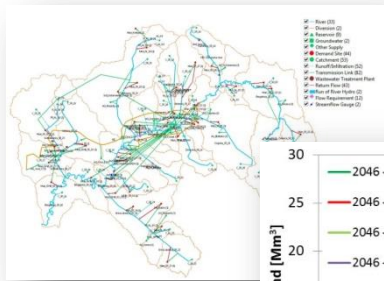
Tour for audience

- Go to the people and the institutions
- Make it a series of events
- Clarify roles from the start

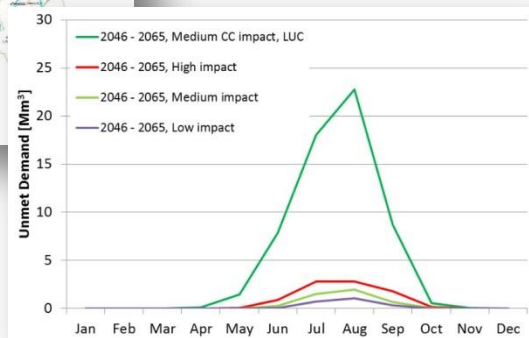


(Bregalnica River Basin Management, 2015)

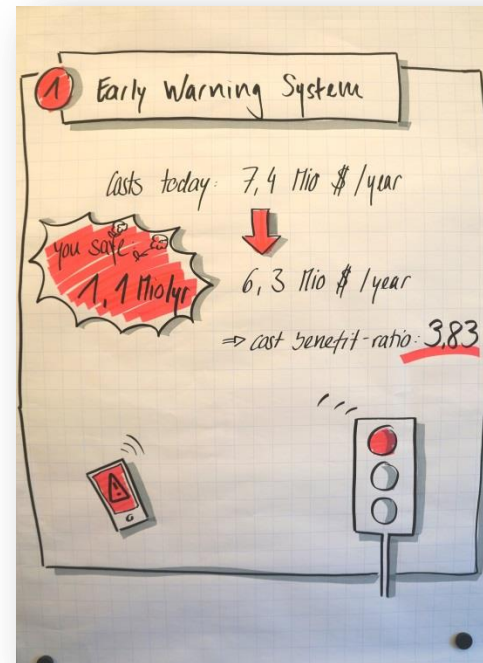
Model for decision-makers



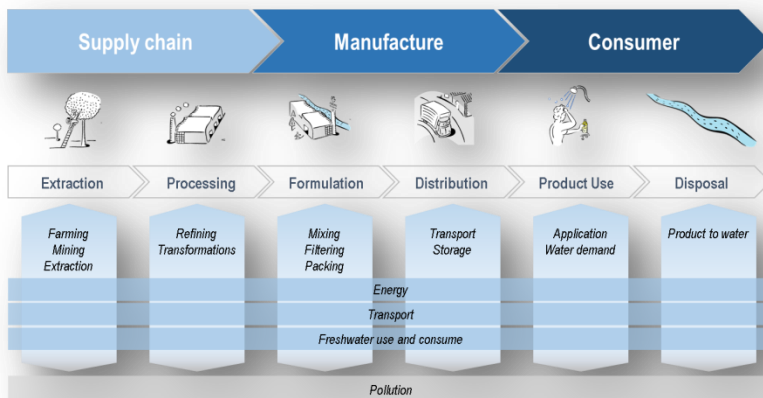
(Bregalnica River Basin Management, 2015)



- Strive for simple model results



(Yangtze River Commission, 2013)



(Cosmetics Industry, Brazil, 2014)

Where to start?

- Make a stakeholder involvement plan per stage of policy cycle, start from issue identification
- Appraise interests and interdependences of stakeholders in each specific case, choose appropriate policy instruments
- Clarify roles of stakeholders with them at the start of the process

Where to stop?

- Question issue identification in case of low or no interest
- Switch to established political processes for political decisions



Contacts:

andreas.zysset@ebp.ch (Zurich)

rubens.spina@geoklock.com.br (São Paulo)

roger.walther@ebp.cl (Santiago de Chile)

juerg.elsener@ebp.hk (Hong Kong)

www.ebp.ch

